

# DEWATERING FILTER

Geocomposite Wick Drainage System  
Geotextile Filtration and Erosion Control

## 4" dia. SS Series

316 Stainless Steel 4" dia. x 6" Length weep hole filter valves.

Primarily used for Concrete Seawalls, Steel Sheet Piling, MSE Retaining Walls, Bridge Abutments.

Also available: ASTM Steel Powder Coated Black.



US PAT #7,615,148

**JET**  
FILTER

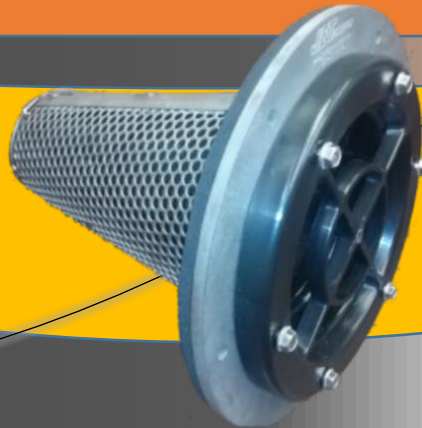


## 2 1/2" dia. ABS

ABS 2 1/2" dia. x 4" Length U/V protected.

Primarily used for Vinyl Sheet Piling, Composite Sheet Piling, Timber Bulkheads.

Colors available: Slate, Gray, Brown and Clay

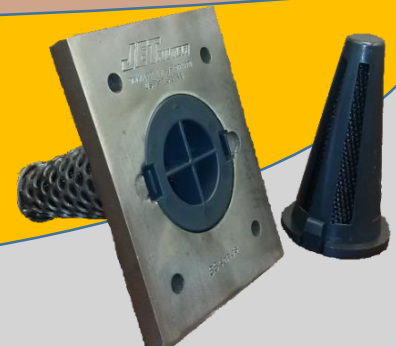


## 6" dia. SS Series

316 Stainless Steel 6" dia. x 8" Length

Primarily used for Steel Sheet Piling, MSE Retaining Walls, Storm Water Channels.

Also available: ASTM Steel powder coated black.



## 2 1/2" dia. SS Series

316 Stainless Steel 2 1/2" dia. x 4" Length

Primarily used for Steel Sheet Piling.

Also available: ASTM Steel powder coated black.